

State of Wyoming Corner Record

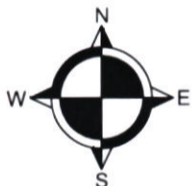
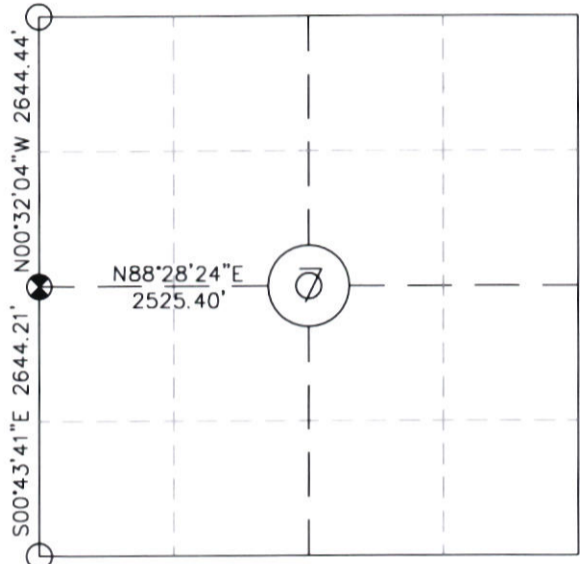
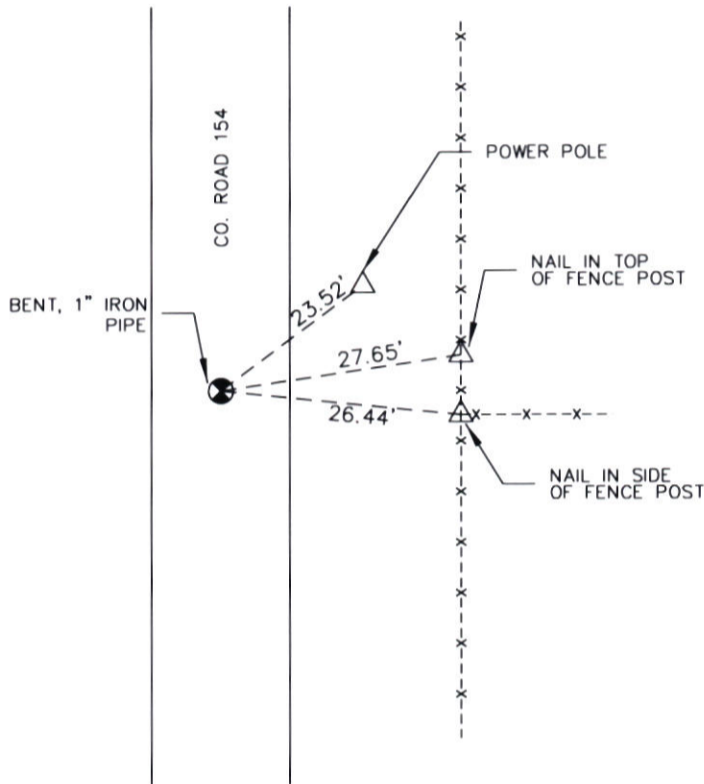
(In compliance with the CORNER PERPETUATION AND FILING ACT, Wyoming Statutes, 2013 Section 33-29-901 through 33-29-910, and the Rules and Regulations of the Board of Professional Engineers and Professional Land Surveyors)

Reverse side of this form may be used if more space is needed.

Record of original survey and citation of source of historical information (if corner is lost or obliterated). Description of corner monumentation evidence found and/or monument and accessories established to perpetuate the location of this corner. Sketch of relative location of monument, accessories, and reference points with course and distance to adjacent corner(s) (if determined in this survey). Method and rationale for reestablishment of lost or obliterated corner.

FOUND: A bent iron pipe and sheared off cap from General Land Office and placed cap at point of insertion.
 SET: Nothing
 REFERENCES: Found as shown

Monument location



LEGEND

- QUARTER CORNER
- REFERENCE
- RELATED CORNER MONUMENT

Date of Field Work: 04/07/2023

Office Reference: 23020

Cross Index Plat

	1	2	3	4	5	6	7	8	9	10	11	12	13	14	15	16	17	18	19	20	21	22	23	24	25
A																									
B		6		5		4		3		2		1													
C																									
D																									
E																									
F																									
G		7		8		9		10		11		12													
H																									
J																									
K																									
L		18		17		16		15		14		13													
M																									
N																									
O																									
P		19		20		21		22		23		24													
Q																									
R																									
S																									
T		30		29		28		27		26		25													
U																									
V																									
W																									
X		31		32		33		34		35		36													
Y																									
Z																									
	1	2	3	4	5	6	7	8	9	10	11	12	13	14	15	16	17	18	19	20	21	22	23	24	25

Firm/Agency, Address

GARY N. GRIGSBY
 Y2 CONSULTANTS
 1725 CAREY AVE
 CHEYENNE, WY 82001
 (307) 632-5656

This corner record was prepared by me or under my direction and supervision.

SEAL & SIGNATURE



Corner Name Quarter Corner Section 7, T 12 N, R 61 W, 6th P.M.

County: LARAMIE Cross-Index No.: G-1

WBPEPLS/PLSW: March 1994; PLSW January 1998, January 2019



RECP #: 857216

RECORDED 6/6/2023 AT 3:09 PM BK# 2837 PG# 941
 Debra K. Lee, CLERK OF LARAMIE COUNTY, WY PAGE 1 OF 1